

CWF Demonstration Gardens

- | | | |
|-----------------------------|--------------------------|-------------------------|
| 1. Drought / Dry-bed Garden | 2. Front Sign Garden | 3. Pond Bed — Pond Area |
| 4. Pond Bed — Dry Area | 5. Service Entrance Beds | 6. Bird Bed |
| 7. Pollinator Bed | 8. Hummingbird Bed | 9. Bog Bed |
| 10. Shade Beds 3 (Rear) | 11. Shade Beds 2 (Acid) | |

Welcome to the Canadian Wildlife Federation's Demonstration Garden. It was created to show Canadians that native plants are both beautiful and beneficial. Some beds have plants that are known to attract certain species, such as our Bird Bed. Other beds have plants that grow in specific conditions, such as our Bog Bed.

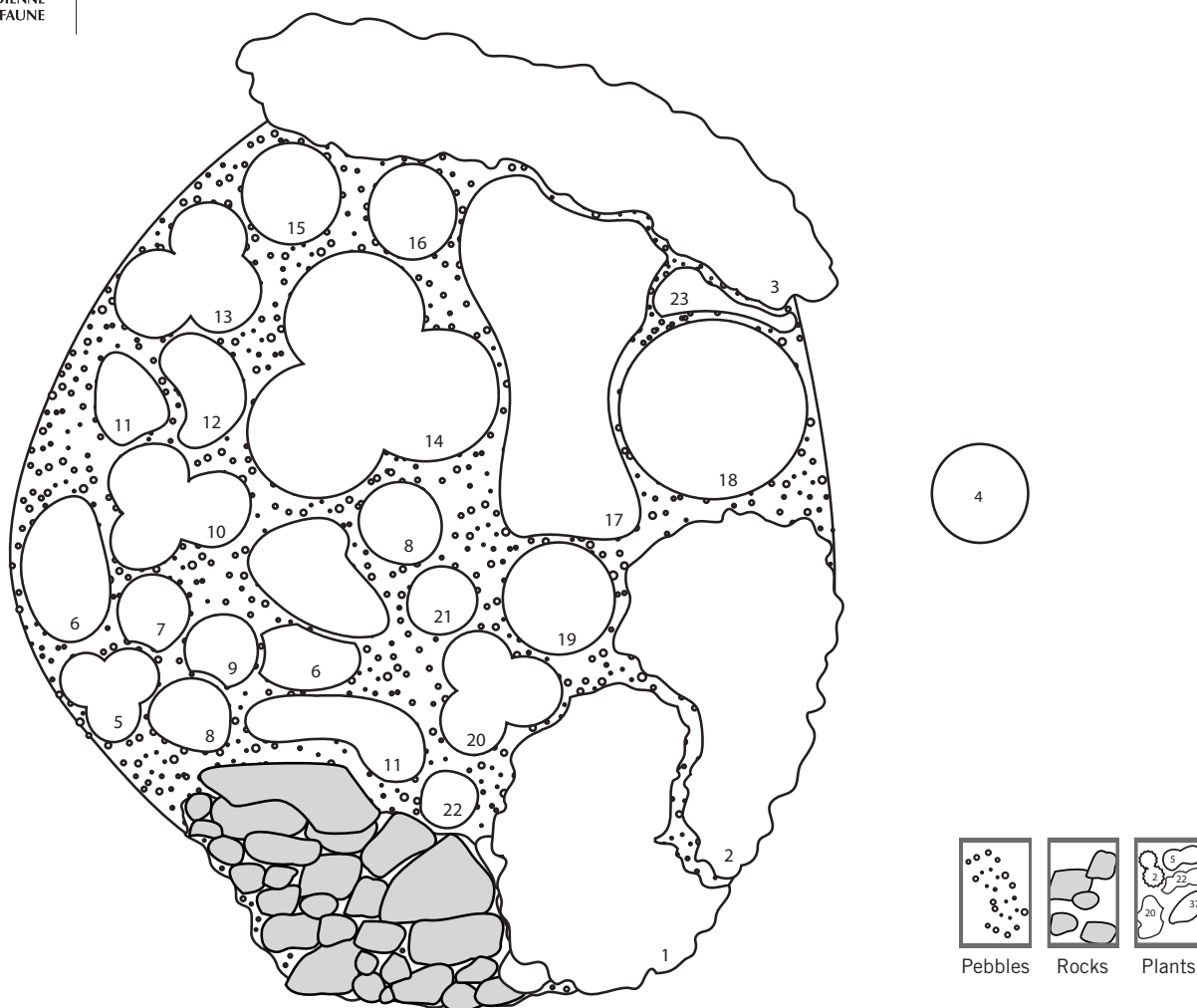
Together, these trees, shrubs, vines, ferns, grasses and herbaceous perennials create habitat for wildlife all year long. They provide food such as nectar, pollen, fruit and seeds, space for resting and nesting and shelter from the elements and predators.

To learn more about these gardens and other wildlife-friendly gardening information, please visit CWF's website **WildAboutGardening.org**.



CANADIAN WILDLIFE FEDERATION
FÉDÉRATION CANADIENNE DE LA FAUNE

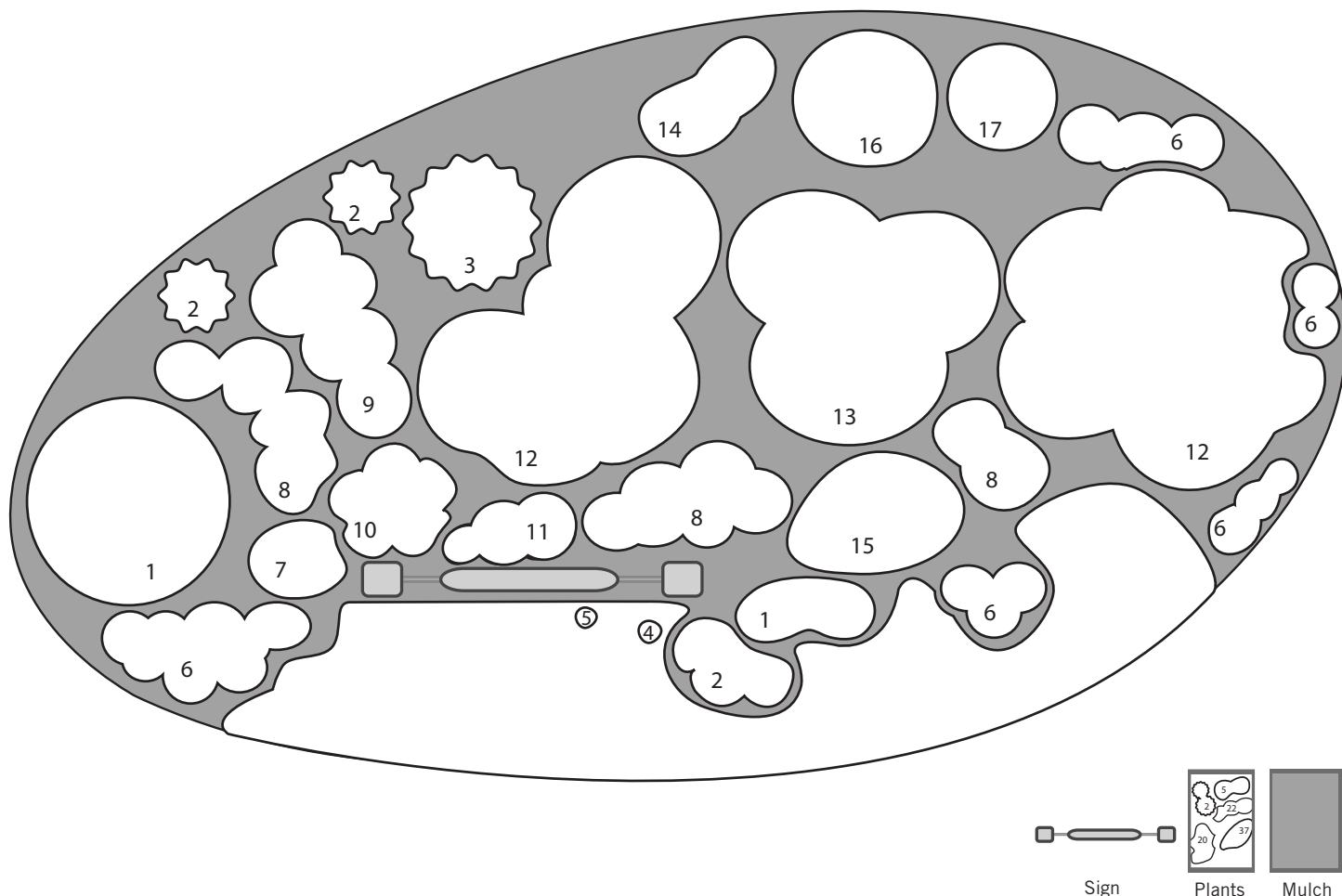
Backyard HABITAT PROGRAM



Drought / Dry-bed Garden

The dry-bed garden demonstrates native and wildlife-friendly plants that can be grown in a dry part of a garden or where water conservation is an issue. Plants are chosen for their tolerance to drought and should not require watering once established.

Name	Type	Name	Type	Name	Type
1 Pasture Rose	DS	8 Hoary Vervain	P	16 Downy Sunflower	P
2 Bush-Honeysuckle	DS	9 Milkweed	P	17 Saw-Tooth Sunflower	P
3 Fragrant Sumac	DS	10 Purple Coneflower	P	18 Cup Plant	P
4 Allegheny Serviceberry	DS	11 Prickly-Pear Cactus	P	19 False Sunflower	P
5 Oysterleaf	P	12 Rattlesnake Master	P	20 Grey-Headed Coneflower	P
6 Common Milkweed	P	13 Wild Yarrow	P	21 Goldenrod	P
7 Purple Prairie Clover	P	14 Culver's Root	P	22 Sweetvetch	P
		15 Siliphium	P	23 Thin-Leaved Coneflower	P



Front Sign Garden

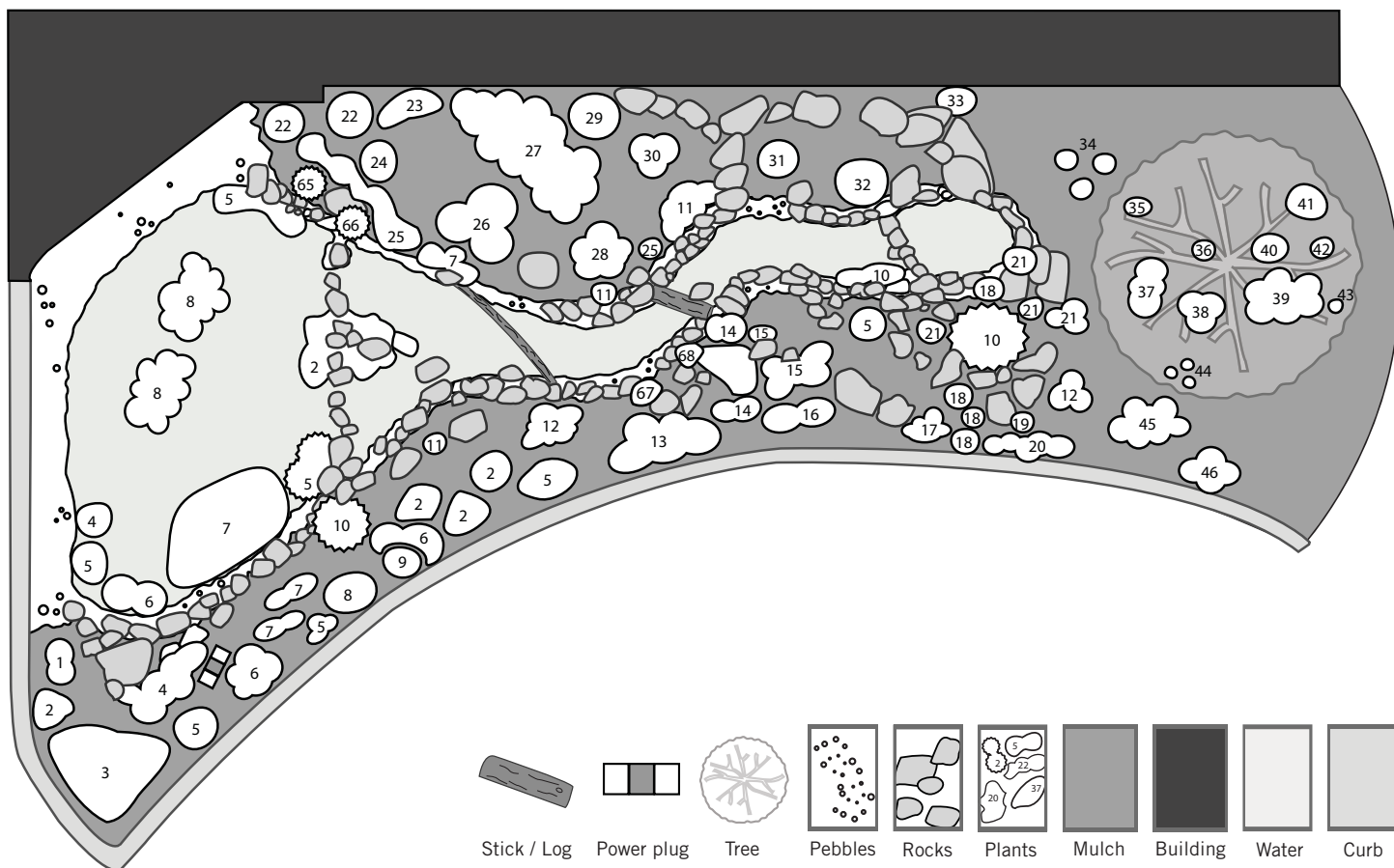
The front sign bed is filled with attractive native perennials, bulbs, and annuals. These plants are chosen for their showy blooms and their attraction to pollinators. Annuals are used to fill up the beds at the front and side where winter snow load makes it difficult to propagate perennials.

Name	Type	Name	Type	Name	Type
1 Side Oats Grama	G	6 Grape Hyacinth	B	12 Great S. Johnswort	P
2 Little Blue Stem Grass	G	7 Wild Hyacinth	B	13 False blue Indigo	P
3 grass	G	8 Sweet Coneflower	P	14 Dwarf (Perennial?) Pansy	P
4 Daffodil	B	9 Thin-Leaved Coneflower	P	15 BeeBalm	P
5 -	-	10 Grey-Headed Coneflower	P	16 Adam's Needle Yucca	P
		11 Coneflower	P	17 Dwarf Yellow Rose	P



CANADIAN WILDLIFE FEDERATION
FÉDÉRATION CANADIENNE DE LA FAUNE

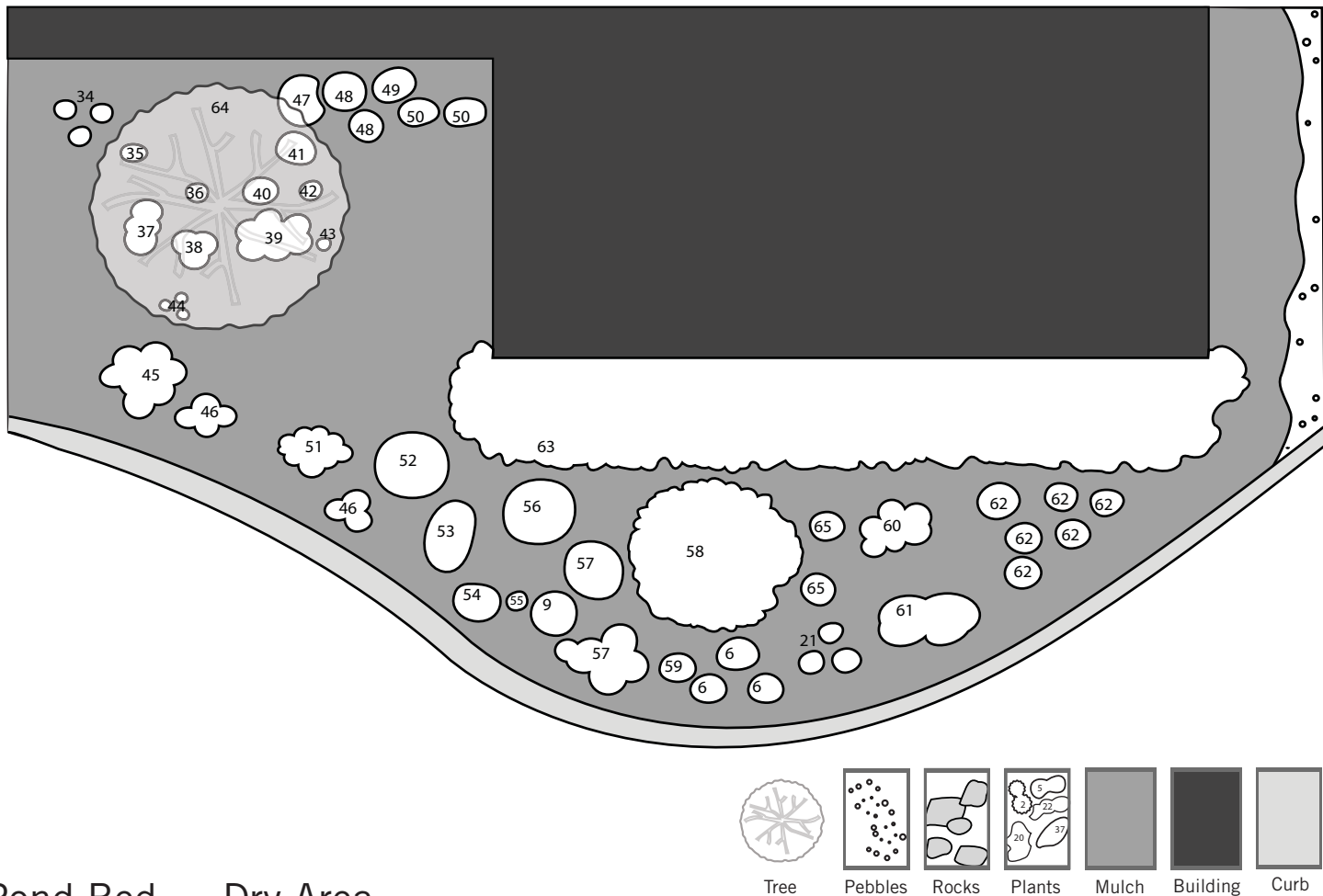
Backyard HABITAT PROGRAM



Pond Bed — Pond Area

The pond bed has both a pond and recirculating stream. It was created to demonstrate a natural pond set up with features such as sloping sides. The pond contains some water plants while the surrounding bed shows off many complementary native plants.

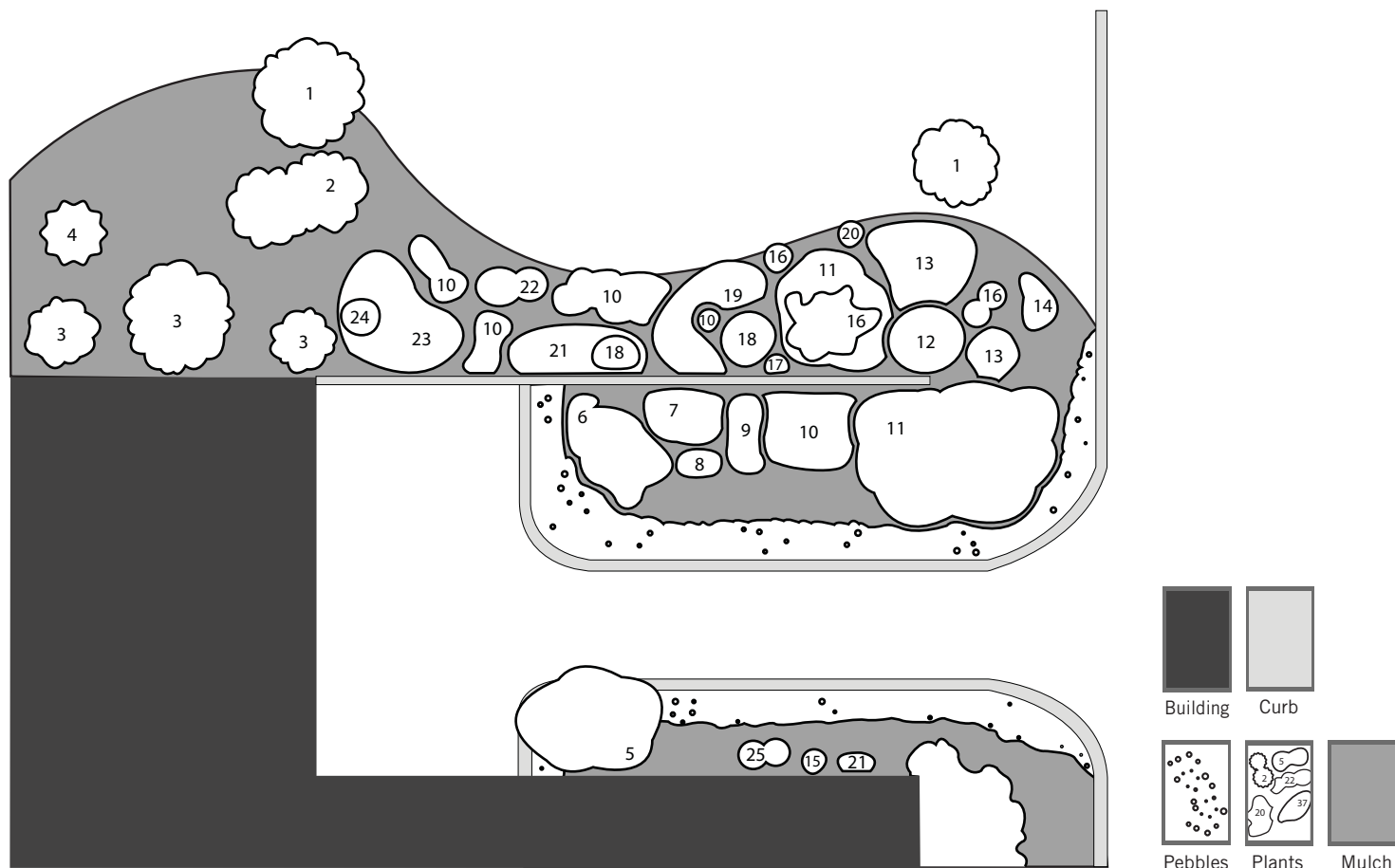
Name	Type	Name	Type	Name	Type
1 CoralBells	P	23 Smooth Solomon's Seal	P	45 Great Blue Lobelia	P
2 Pussytoes	P	24 Eastern Joe-Pye Weed	P	46 Prairie Smoke	P
3 Nodding Wild Onion	P	25 Cardinal Flower	P	47 White Woodland Aster	P
4 Dense Blazing Star	P	26 Mountain Hollyhock	P	48 Christmas Fern	P
5 Moonbeam Tickseed	P	27 Common evening primrose	B	49 Blue-Stemmed Goldenrod	P
6 Lanceleaf Coreopsis	P	28 Grey Goldenrod	P	50 Doll's Eyes	P
7 Blue Flag Iris	P	29 Black Cohosh	P	51 Meadow Blazing Star	G
8 Tall Goldenrod	P	30 Goldenrod	P	52 Grey-Headed Coneflower	G
9 Indian Blanket	P	31 Wood Fern	P	53 Blue Flax	G
10 Spreading juniper		32 Maidenhair Fern	P	54 Adam's Needle	P
11 False Solomon's Seal	P	33 Virginia Waterleaf	P	55 Anemone	P
12 Western Jacob's Ladder	P	34 Fern	P	56 Michigan Lily	P
13 Purple Flowering Onion	P	35 Jack-in-the-Pulpit	P	57 Wild Bergamot	P
14 AlumRoot	P	36 Wild Bleeding Heart	P	58 Shrubby Cinqfoil	P
15 Dwarf Hairy Beardtongue	P	37 Virginia Bluebells	P	59 Liatris	P
16 Longleaf Bluets	P	38 Sharp-Lobed Hepatica	P	60 Canada Lily	P
17 Bluets	P	39 Violet	P	61 Pearly Everlasting	P
18 Violet	P	40 Shooting Star	P	62 Purple Coneflower	DS
19 Blue-Eyed Grass	P	41 -	P	63 Grey Dogwood	DT
20 Pasqueflower	P	42 Squirrel-Com	P	64 Pagoda Dogwood	G
21 Barren Ground Strawberry	P	43 Bellwort	P	65 Foxglove Beardtongue	P
22 Royal Fern	P	44 Wild Columbine	P	GG Grasses(4)	



Pond Bed — Dry Area

The pond bed has both a pond and recirculating stream. It was created to demonstrate a natural pond set up with features such as sloping sides. The pond contains some water plants while the surrounding bed shows off many complementary native plants.

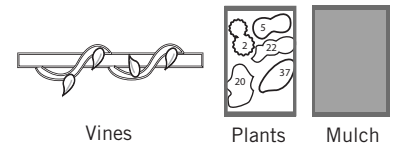
Name	Type	Name	Type	Name	Type
1 CoralBells	P	23 Smooth Solomon's Seal	P	45 Great Blue Lobelia	P
2 Pussytoes	P	24 Eastern Joe-Pye Weed	P	46 Prairie Smoke	P
3 Nodding Wild Onion	P	25 Cardinal Flower	P	47 White Woodland Aster	P
4 Dense Blazing Star	P	26 Mountain Hollyhock	P	48 Christmas Fern	P
5 Moonbeam Tickseed	P	27 Common evening primrose	B	49 Blue-Stemmed Goldenrod	P
6 Lanceleaf Coreopsis	P	28 Grey Goldenrod	P	50 Doll's Eyes	P
7 Blue Flag Iris	P	29 Black Cohosh	P	51 Meadow Blazing Star	G
8 Tall Goldenrod	P	30 Goldenrod	P	52 Grey-Headed Coneflower	G
9 Indian Blanket	P	31 Wood Fern	P	53 Blue Flax	G
10 Spreading juniper		32 Maidenhair Fern	P	54 Adam's Needle	P
11 False Solomon's Seal	P	33 Virginia Waterleaf	P	55 Anemone	P
12 Western Jacob's Ladder	P	34 Fern	P	56 Michigan Lily	P
13 Purple Flowering Onion	P	35 Jack-in-the-Pulpit	P	57 Wild Bergamot	P
14 AlumRoot	P	36 Wild Bleeding Heart	P	58 Shrubby Cinqfoil	P
15 Dwarf Hairy Beardtongue	P	37 Virginia Bluebells	P	59 Liatris	P
16 Longleaf Bluets	P	38 Sharp-Lobed Hepatica	P	60 Canada Lily	P
17 Bluets	P	39 Violet	P	61 Pearly Everlasting	P
18 Violet	P	40 Shooting Star	P	62 Purple Coneflower	DS
19 Blue-Eyed Grass	P	41 -	P	63 Grey Dogwood	DT
20 Pasqueflower	P	42 Squirrel-Com	P	64 Pagoda Dogwood	G
21 Barren Ground Strawberry	P	43 Bellwort	P	65 Foxglove Beardtongue	P
22 Royal Fern	P	44 Wild Columbine	P	GG Grasses(4)	



Service Entrance Beds

While this bed does not have a specific theme, it is a continuation of the gardens around the building and it beautifies an area otherwise not normally considered pleasing to the eye. The shrubs numbered one through four are all extensions of the Bird Bed.

Name	Type	Name	Type	Name	Type
1 Canada Serviceberry	DS	9 Garden Sage	P	17 Sky Blue Aster	P
2 Golden Flowering Currant	DS	10 Sedum	P	18 Golderod	P
3 Bladdernut	DS	11 False Sunflower	P	19 Calico Aster	P
4 Hemlock	ES	12 Grey-Headed Coneflower	P	20 Thimbleweed	P
5 Pokeweed	DS	13 Blue Fax	P	21 Showy Tick-Trefoil	P
6 Garden Chives	DS	14 Sea Thrift	P	22 Copper's Milkvetch	P
7 Lavender	DS	15 -	P	23 Foamflower	P
8 Nutmeg Thyme	ES	16 Barren Ground Strawberry	P	24 Blue Vervain	P
				25 Pearly Everlasting	P



The bird bed was created to demonstrate perennials that can be planted to provide seed-eating birds with a source of food. A perch with native grape vine was also added. As a supplement to the bird bed, a number of shrubs were added to provide berries for birds and shelter against weather and predators. As this part of the bed is shaded for most of the day, shrubs were chosen for their ability to grow in shade, as well as provide blooms in the spring, fruit in the fall and shelter through the year.

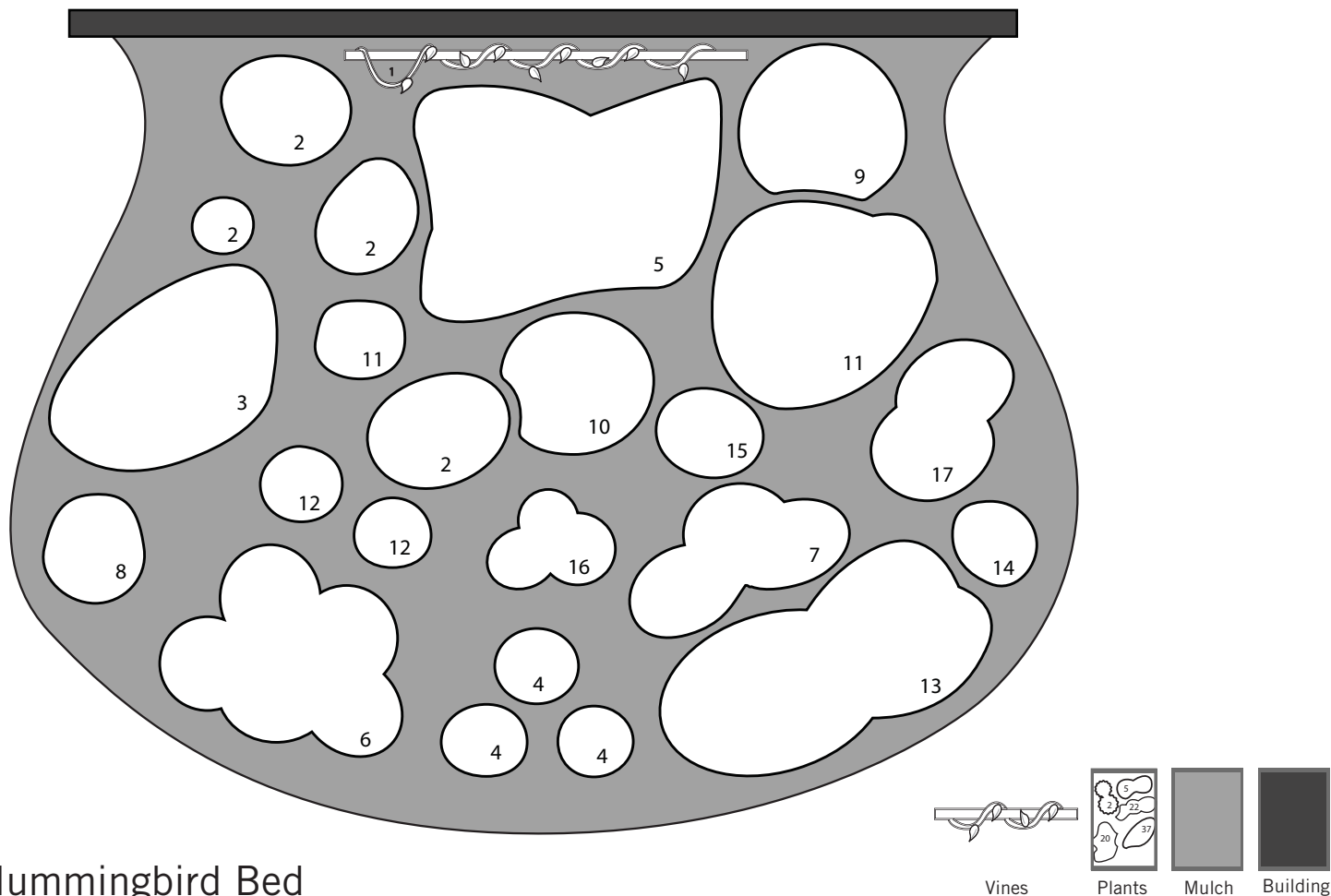
	Name	Type		Name	Type		Name	Type
1	Grey Dogwood	DS	6	Lanceleaf Coreopsis	P	11	New England Aster	P
2	Riverbank Grape	V	7	Comon Milkweed	P	12	Woodland Sunflower	P
3	False Sunflower	P	8	Wood Anemone	P	13	Showy Sunflower	P
4	Thin-Leaved Coneflower	P	9	Purple Conflower	P	14	Cup Plant	P
5	Autumn Joy Stonecrop	P	10	Saw-Tooth Sunflower	P	15	Little Bluestern Grass	P
						16	Grey-Headed Coneflower	P



Pollinator Garden

The pollinator garden was designed to demonstrate plants attractive to butterflies, bees and other pollinators. Plants were chosen for their blooms and a wide variety was included to ensure blooms throughout the spring, summer, and fall. We also included some plants, such as evening primrose, that would be attractive to moths.

Name	Type	Name	Type	Name	Type
1 America Bittersweet	V	21 Obedient Plant	P	42 Evening Primrose	P
2 Pasture Rose	DS	22 New-England Aster	P	43 Thimbleweed	P
3 Button Bush	DS	23 Prairie Blazing Star	P	44 Rough-stemmed Goldenrod	P
4 Showy Mountain Ash	DS	24 Purple Coneflower	P	45 -	-
5 Bearberry Honeysuckle/Twin Berry	DS	25 Flat-Topped White Aster	P	46 Rattlesnake Master	P
6 New Jersey Tea	DS	26 White turtlehead	P	47 Field Pussytoes	P
7 Red Osier Dogwood	DS	27 Grey-Headed Coneflower	P	48 Blue-Eyed Grass	P
8 Sand Cherry	DS	28 Orange Coneflower	P	49 Common Sundrops	G
9 Grey Dogwood	DS	29 Thin-Leaved Coneflower	P	50 Little Blue Stern Grass	G
10 Savin Juniper	ES	30 Wild Geranium	P	51 Mosquito Grass	G
11 Eastern White Cedar	ES	31 Golden Alexanders	P	52 Prairie Dropseed	P
12 False blue Indigo	P	32 Tall Coreopsis	P	53 Canada Tick-Trefoil	P
13 Blue Flag Iris	P	33 Lanceleaf Coreopsis	P	54 Woodland Sunflower	P
14 Fireweed	P	34 Stiff Coreopsis	P	55 Goldenrod	P
15 Wild Flax	P	35 Sand Coreopsis	P	56 Bird's Foot Violet	P
16 Foxglove Beardtongue	P	36 -	-	57 Pearly Everlasting	P
17 Green Alumroot	P	37 Rough Avena	P	58 Tall Sunflower	P
18 Canada Lily	P	38 Pasque Flower	P	59 Green-Headed Coneflower	P
19 Wild Lupin	P	39 Autumn Joy Stonecrop	P	60 Showy Sunflower	P
20 Purple Angelica	P	40 Nodding Wild Onion	P	61 Common Milkweed	P
		41 Pink Fleabane	P	62 Dog Violet	P



Hummingbird Bed

The hummingbird garden was created using plants that attract hummingbirds. A decorative trellis was added to allow the addition of a flowering vine.

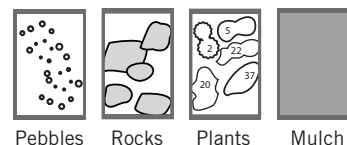
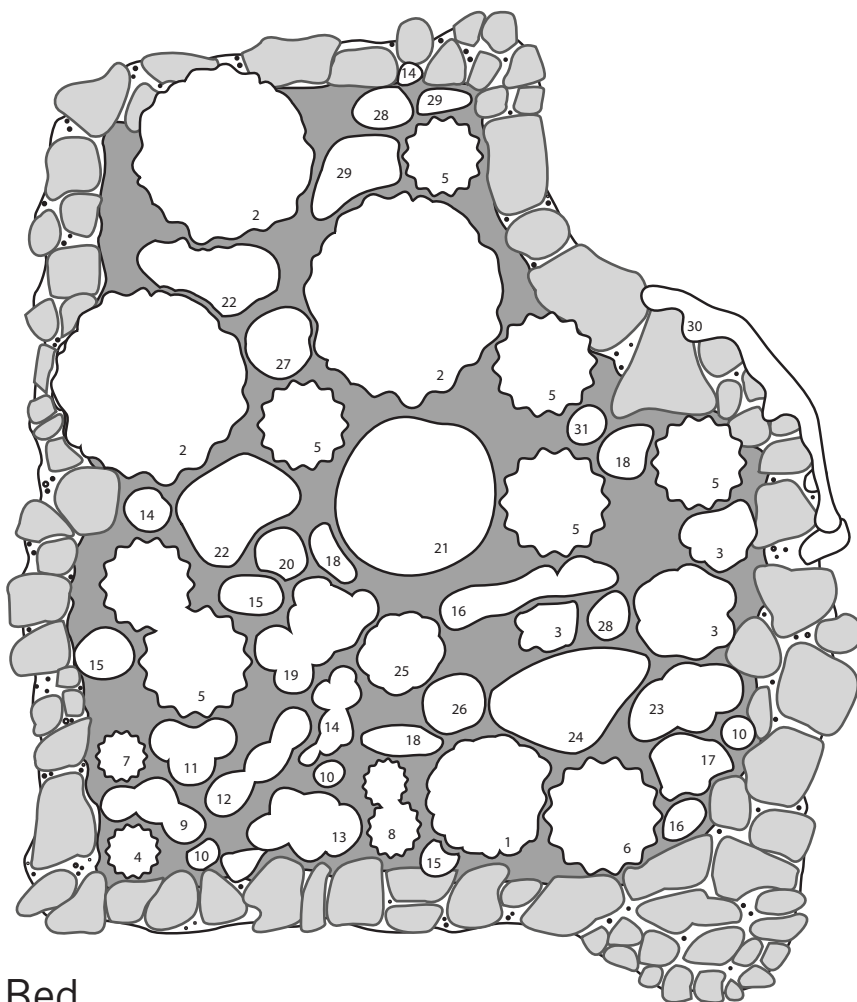
Name	Type	Name	Type	Name	Type
1 Dropmore Scarlet Honeysuckle	V	7 Heal-All	P	13 Water Avens	P
2 Common Milkweed	P	8 Harebells	P	14 Beebalm	P
3 Obedient Plant (white variety)	P	9 Late Goldenrod	P	15 Daisy Fleabane	P
4 Wild Columbine	P	10 Dense Blazing Star	P	16 Pearly Everlasting	P
5 Old-Fashioned Bleeding Heart	P	11 Wild Bergamont	P	17 Obedient Plant (pink variety)	P
6 Hairy Beardtongue	P	12 Common Sundrops	P		



CANADIAN WILDLIFE
FEDERATION

FÉDÉRATION
CANADIENNE
DE LA FAUNE

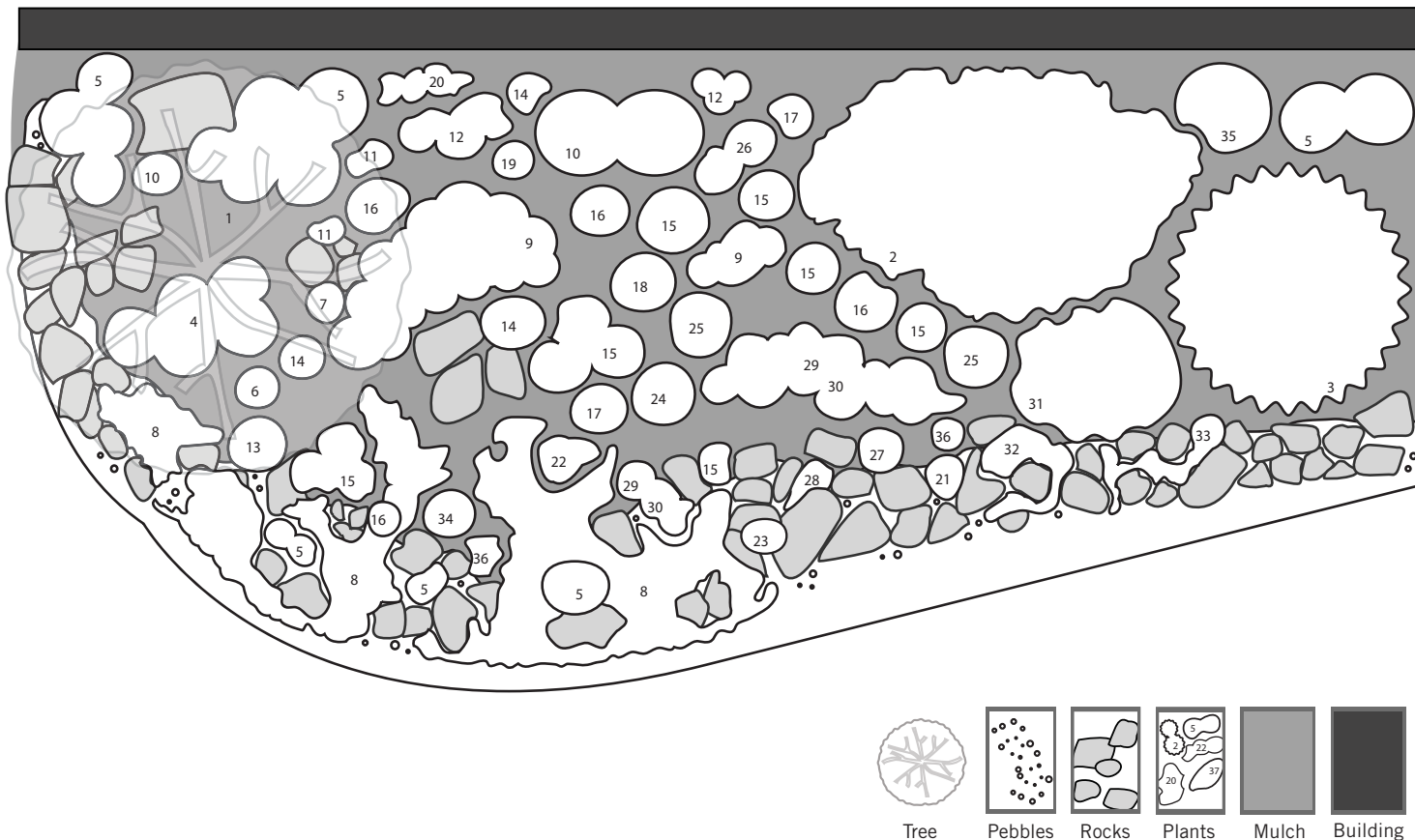
Backyard HABITAT PROGRAM



Bog Bed

The bog bed was created to demonstrate plants that can be grown in the wet area of a garden. It showcases the use of native wetland plants and highlights a current trend in gardening towards the creation of water gardens.

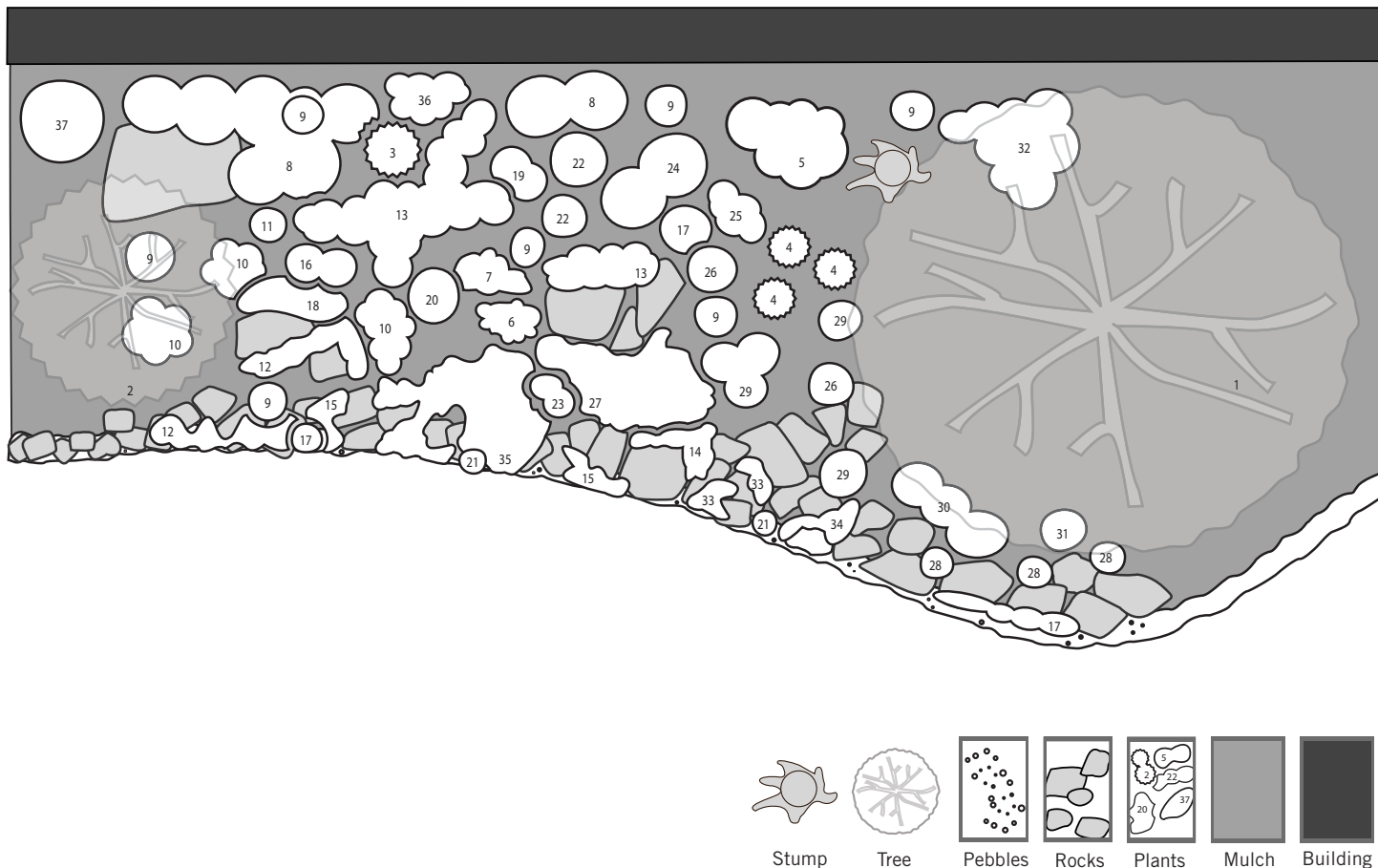
Name	Type	Name	Type	Name	Type
1 Meadowsweet	DS	11 Marsh Marigold	P	21 Swamp Rose Mallow	P
2 Sweet Gale	DS	12 Marsh Cinquefoil	P	22 Wild Mint	P
3 Shrub Willow	DS	13 Healall	P	23 Water Avens	P
4 Blue Rush	G	14 Cardinal Flower	P	24 Fringed Looserstife	P
5 Fringed Sedge	G	15 Bottle Gentain	P	25 Culver's Root	P
6 Brown Fox Sedge	G	16 Geranuim	P	26 Great St. Johnswort	P
7 Sedge	G	17 Forget-Me-Not	P	27 Goldenrod	P
8 Scouring Rush	G	18 Spotter Joe-Pye Weed	P	28 Spotted Jewelweed	P
9 Dog Violet	P	19 Great Blue Lobelia	P	29 Rough Bedstraw	P
10 Blue Flag Iris	P	20 Swamp Milkweed	P	30 Blue Monkey Flower	P



Shade Beds Three (Rear)

The shade beds demonstrate the ornamental value of native shade perennials and ferns in a garden setting. Two cherry trees were added for additional shade. The spaces between the beds were filled with ninebark and flowering raspberry. Part of the bed was used to demonstrate plants useful for a shade bed with acid soil.

Name	Type	Name	Type	Name	Type
1 Schubert Chokecherry	DT	13 Showy Stonecrop	P	25 Spotted joe-Pye Weed	P
2 Flowering Raspberry	DS	14 Great Blue Lobelia	P	26 Blue Cohosh	P
3 -	-	15 Mitrewort	P	27 Thin-Leaved Coneflower	P
4 Jacob's Ladder	P	16 Columbine-Meadowrue	P	28 Common Milkweed	P
5 Ostrich Fern	P	17 Greek Valerian	P	29 Dog Violet	P
6 Virginia Bluebells	P	18 Bottle Gentian	P	30 Sweet White Violet	P
7 Wild Columbine	P	19 White Snakeroot	P	31 Black Cohosh	P
8 Creeping Stonecrop	P	20 Small Enchanter's Nightshade	P	32 Pussytoes	P
9 Wild Ginger	P	21 Globeflower	P	33 Rock Cress	P
10 Royal Fern	P	22 Greek Yarrow	P	34 Goldenrod	P
11 Rose-Twisted Stalk	P	23 Common Fleabane	P	35 Interrupted Fern	P
12 Starry Flase Solomon's-Seal	P	24 Pearly everlasting	P	36 Bertram Anderson Stoncrop	P



Shade Beds Two (Acid)

The shade beds demonstrate the ornamental value of native shade perennials and ferns in a garden setting. Two cherry trees were added for additional shade. The spaces between the beds were filled with ninebark and flowering raspberry. Part of the bed was used to demonstrate plants useful for a shade bed with acid soil.

Name	Type	Name	Type	Name	Type
1 Schubert Chokecherry	DT	13 Wild Ginger	P	25 Canada Mayflower	P
2 -	-	14 Creeping Stonecrop (dwarf)	P	26 Late Goldenrod	P
3 Dwarf Eastern Hemlock	ES	15 White Stonecrop	P	27 Foamflower	P
4 Ground Hemlock/ CA. Yew	ES	16 Rough Avenas	P	28 Harebells	P
5 Diablo Ninebark	DS	17 Thin-Leaved Coneflower	P	29 Wild Geranium	P
6 Jade Bearberry	BE	18 Bowman's Root	P	30 Thimbleweed	P
7 Partridgeberry	BE	19 Wood Fern	P	31 Jacob's Ladder	P
8 Ostrich Fern	P	20 Boneset	P	32 Mayapple	P
9 Columbine-Meadowrue	P	21 Pale Corydalis	P	33 Hens and Chicks	P
10 Sweet White Violet	P	22 Christmas Fern	P	34 Pussytoes	P
11 Jack-in-the-Pulpit	P	23 Blue-Bead Lily/ Yellow Clintonia	P	35 Creeping Stonecrop	P
12 Wood Anemone	P	24 Sensitive Fern	P	36 Small Enchanter's Nightshade	P
				37 Interrupted Fern	P